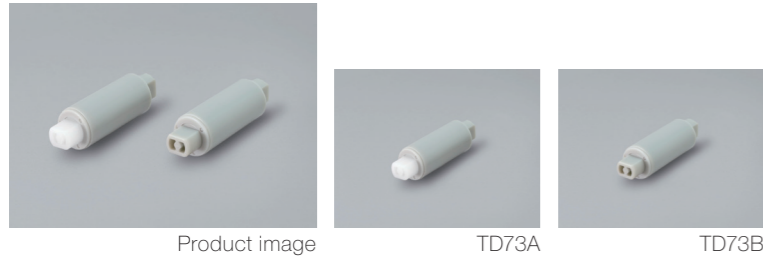


Product lineup



Features

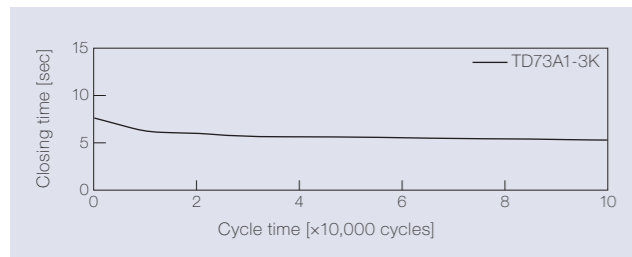
- The smallest horizontal use damper (Ø 11 mm)
- The form of the TD73 is symmetrical, so it can be inserted in either direction
- Gray color makes the product inconspicuous
- Best-selling products

Product name	Torque [N·m] (lb·in)	Damping direction	Shaft color
TD73A1-0.5K	0.05 (0.44)	CW	Natural
TD73A1-1K	0.10 (0.89)		
TD73A1-2K	0.20 (1.77)		
TD73A1-3K	0.29 (2.57)		

Product name	Torque [N·m] (lb·in)	Damping direction	Shaft color
TD73B1-0.8K	0.08 (0.71)	CCW	Gray
TD73B1-1K	0.10 (0.89)		
TD73B1-2K	0.20 (1.77)		
TD73B1-3K	0.29 (2.57)		

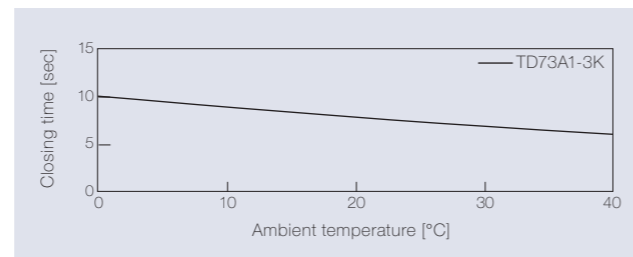
Product specifications

Durability



Torque	0.29 N·m (2.57 lb·in)
Radial load	N/A
Angle range of closing time	70 to 0 deg.
Temperature	23 ± 2°C (73.4 ± 35.6°F)
Durability	100,000 cycles

Temperature characteristics



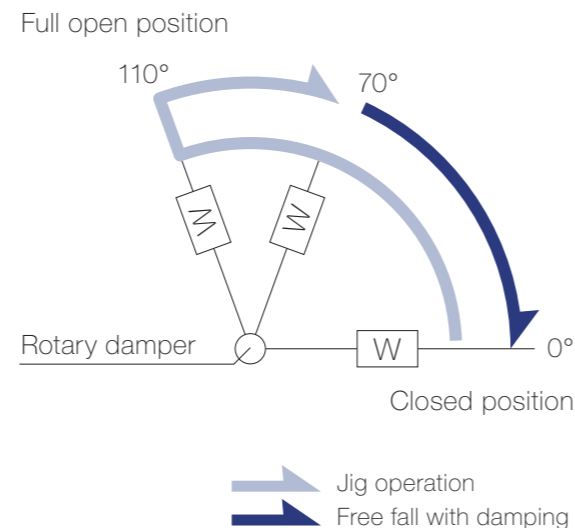
Measured according to the performance management testing method shown below after leaving in each designated ambient temperature for over one hour.

Performance management testing method

As the torque of partial rotation angle dampers is not consistent, the closing time measurement jig is used for the performance tests.

[Operation during measurement]
 (Secures the housing of a rotary damper and moves its shaft)
 All rotary dampers are managed by the following closing time test.

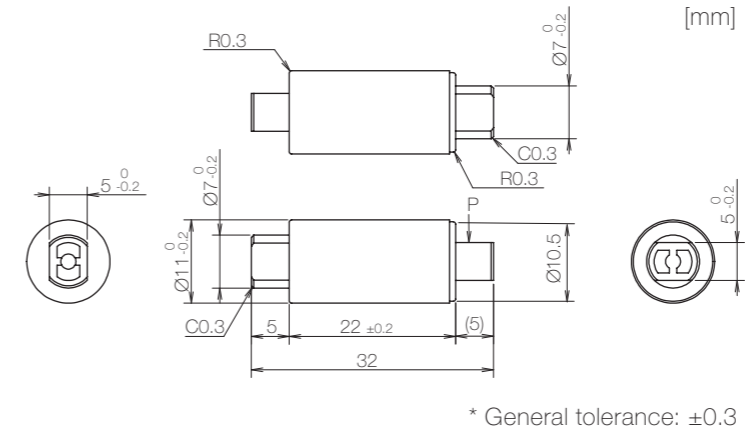
Test mode [110° → 70° (Pause) → (Free fall with damping) → 0°]
 * Horizontal plane: 0°



Inspection specification before shipping

Type	Preset torque [N·m] (lb·in)	Closing time
0.5K	0.05 (0.44)	2 to 10 sec
0.8K	0.08 (0.71)	
1K	0.10 (0.89)	
2K	0.20 (1.77)	
3K	0.29 (2.57)	5 to 15 sec

Product information



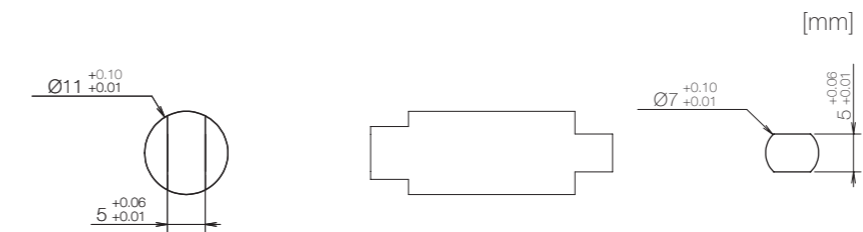
* General tolerance: ±0.3

- Opening angle: 110°
- Product weight: Approx. 3 g
- Allowable radial load (P): 29.4 N

Main materials

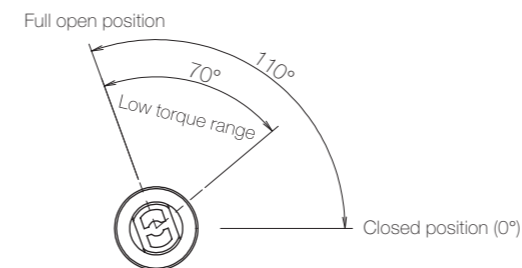
Housing	Plastic (POM)
Cap	Plastic (POM)
Shaft	Plastic (POM)

Dimensions related to mounting

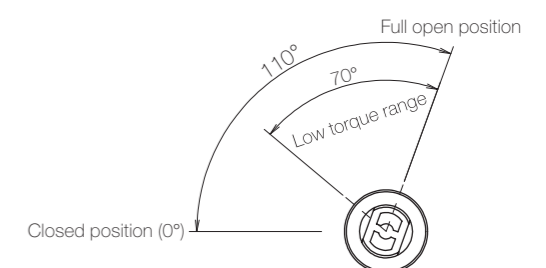


Opening angle

TD73A



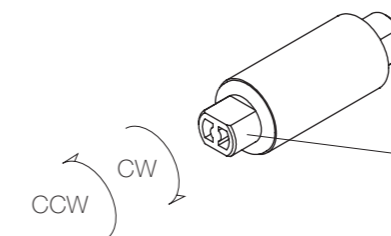
TD73B



* Shaft position at the time of shipping: Closed position

Damping directions

Rotation directions of the shaft to which torque is applied



* Housing secured / Shaft rotatable

Damping direction	Shaft color
CW	Natural
CCW	Gray