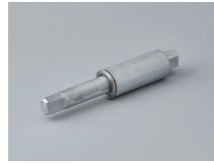


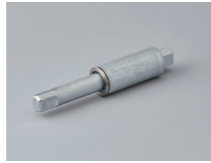
Product lineup



Product image



TD22A



TD22B

Features

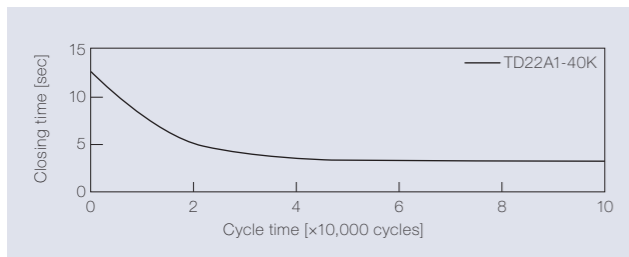
- Slim design with long mounting shaft
- Outer diameter of $\varnothing 16.2$ mm
- High torque (Up to 4 N·m)
- Durable for 100,000 cycles
- Wide temperature range for operation (-10°C to 40°C)

Product name	Torque [N·m] (lbf·in)	Damping direction
TD22A1-25K	2.45 (21.68)	CW
TD22A1-35K	3.43 (30.36)	
TD22A1-40K	3.92 (34.69)	

Product name	Torque [N·m] (lbf·in)	Damping direction
TD22B1-25K	2.45 (21.68)	CCW
TD22B1-35K	3.43 (30.36)	
TD22B1-40K	3.92 (34.69)	

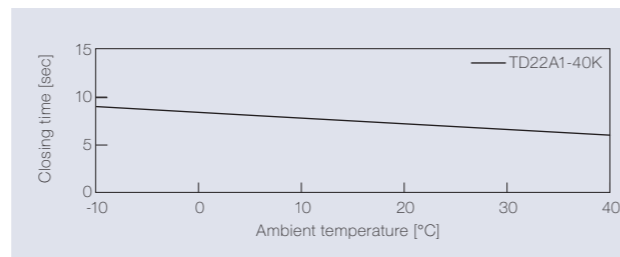
Product specifications

Durability



Torque	3.92 N·m (34.69 lbf·in)
Radial load	N/A
Angle range of closing time	70 to 0 deg.
Temperature	23 ± 2°C (73.4 ± 35.6°F)
Durability	100,000 cycles

Temperature characteristics



Measured according to the performance management testing method shown below after leaving in each designated ambient temperature for over one hour.

Performance management testing method

As the torque of partial rotation angle dampers is not consistent, the closing time measurement jig is used for the performance tests.

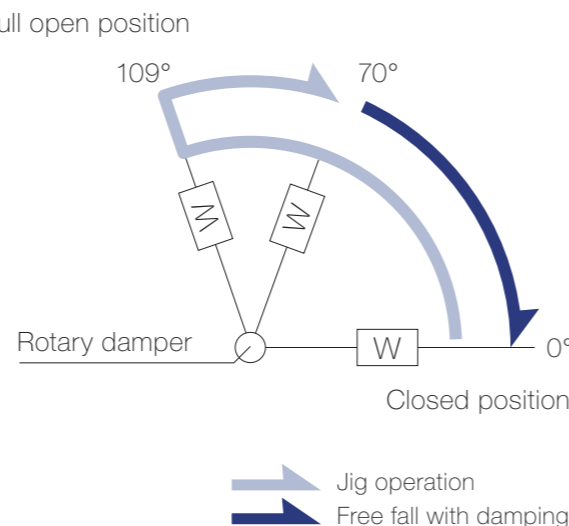
[Operation during measurement]

(Secures the housing of a rotary damper and moves its shaft)

All rotary dampers are managed by the following closing time test.

Test mode [109° → 70° (Pause) → (Free fall with damping) → 0°]

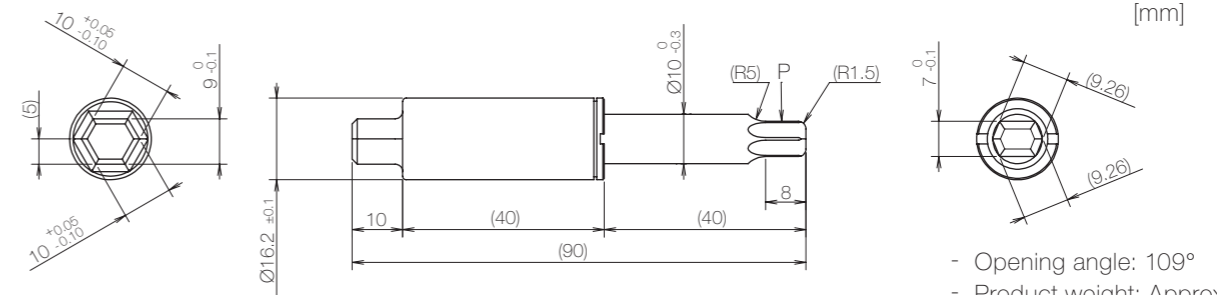
* Horizontal plane: 0°



Inspection specification before shipping

Type	Preset torque [N·m] (lbf·in)	Closing time
25K	2.45 (21.68)	4 to 18 sec
35K	3.43 (30.36)	
40K	3.92 (34.69)	

Product information



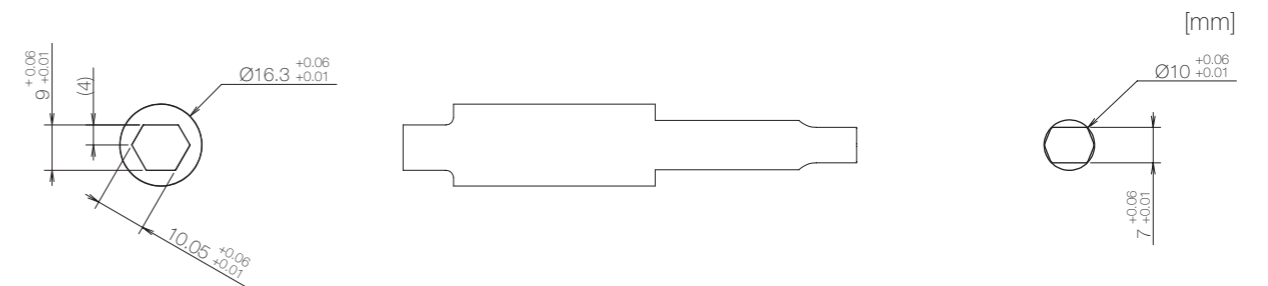
- Opening angle: 109°
- Product weight: Approx. 65 g
- Allowable radial load (P): 19.6 N

Main materials

Housing	Zinc alloy (ZDC)
Ring screw	Stainless steel (SUS)
Shaft	Zinc alloy (ZDC)

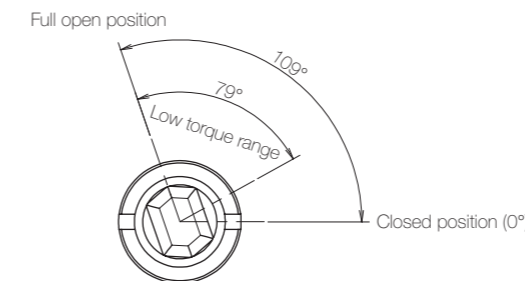
* General tolerance: ±0.2

Dimensions related to mounting

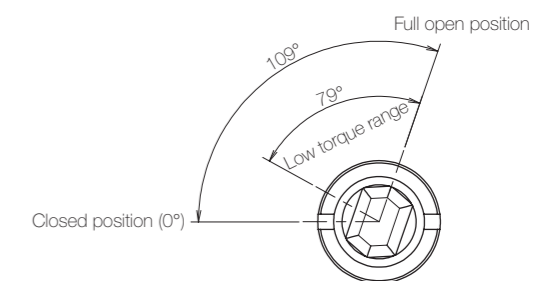


Opening angle

TD22A



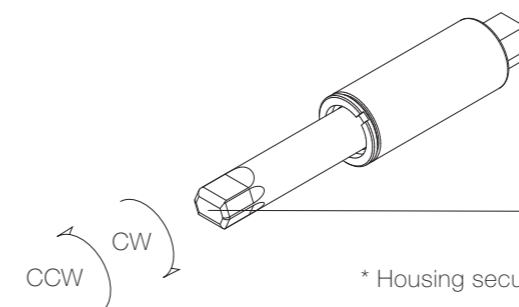
TD22B



* Shaft position at the time of shipping: Closed position

Damping directions

Rotation directions of the shaft to which torque is applied



* Housing secured / Shaft rotatable

Damping direction	Engraved mark
CW	R
CCW	L