

# SR2 / SR12

---

Bi-directional No-back clutch

**T O K**

## Clutch stops at any desired position

The reverse input shutoff mechanism allows you to easily raise and lower heavy loads with simple manual operation. It transmits power from the input shaft to the output side, while simultaneously locking the output shaft when there is no input. This means that once you stop providing input, the load is precisely and securely held in place.



SR2 Video

### Features

- Easy to use with a straightforward operation method.
- Compact design adapts to diverse environments.
- High cost-performance.
- Simple installation requires no complex processing.
- No external power source like electricity is needed.

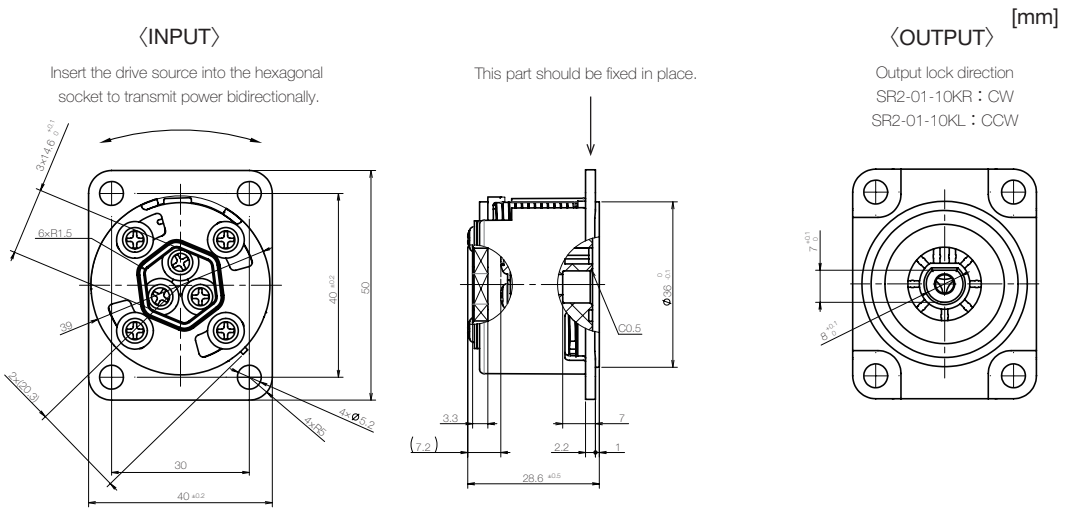
# SR2

Lock torque	1.25 N·m	Allowable rotational speed (Approximate)	60 r.p.m
Weight	approx. 110 g	Durability	10,000 cycles (*1)

\*1 The durability test condition is defined as one cycle of bidirectional operation at 62 min<sup>-1</sup> for 12.5 rotations under a 1.25 N-m load. There is a 3-second pause when reversing the rotational direction.



CAD download



# SR12

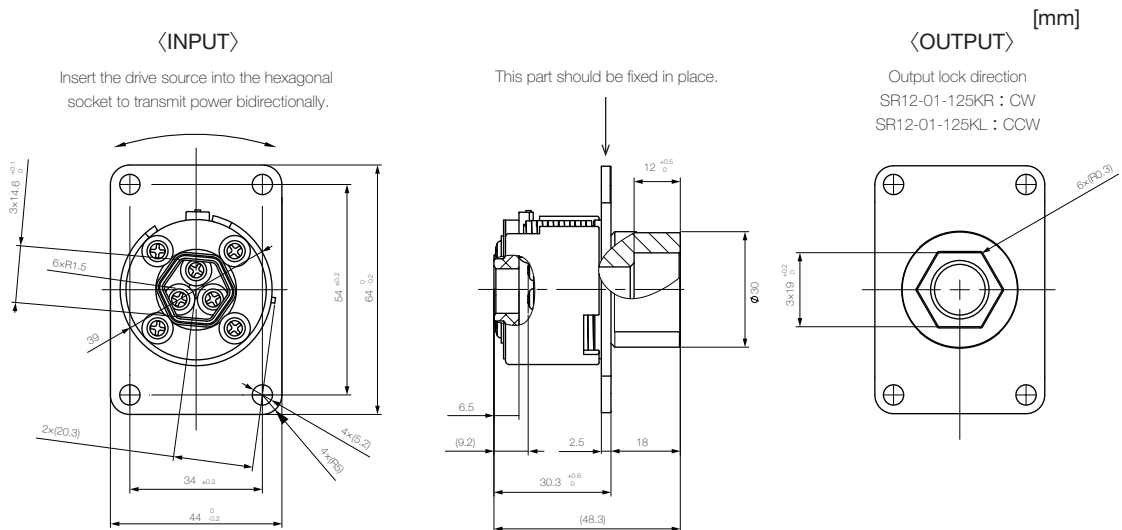
(High torque type)

Lock torque	12.5 N·m	Allowable rotational speed (Approximate)	60 r.p.m
Weight	approx. 250 g	Durability	5,000 cycles (*2)

\*2 The durability test condition is defined as one cycle of bidirectional operation under a 12.5 N-m load: [CW: 60 min<sup>-1</sup> for 10 rotations] ↔ [CCW: 5 min<sup>-1</sup> for 1 rotation]. There will be a 2-second pause when reversing the rotational direction.



CAD download



Contact us

Tel  
+81 50-1720-0482



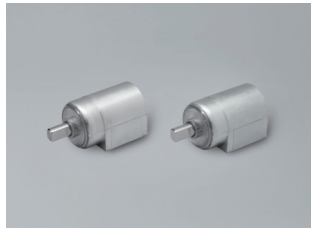
E-Mail  
support@tok-inc.com



Web  
https://tok-inc.com/en/



Product lineup



Product image



SR3-01-A



SR3-02-B

Features

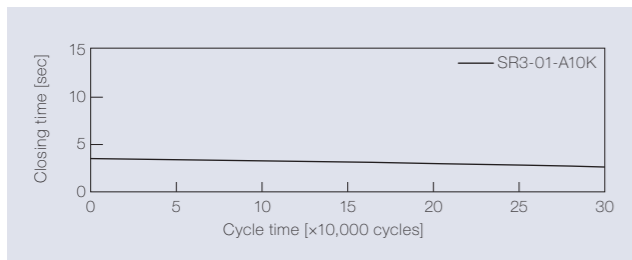
- Automatic torque adjustment (Applicable to 1 N·m or smaller)
- Small variation in closing time
- Durable for 300,000 cycles

Product name	Torque [N·m] (lbf·in)	Damping direction
SR3-01-A10K	1.0 (8.85)	CW

Product name	Torque [N·m] (lbf·in)	Damping direction
SR3-02-B10K	1.0 (8.85)	CCW

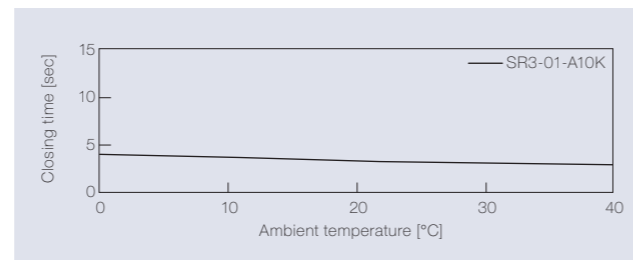
Product specifications

Durability



Torque	1.0 N·m (8.85 lbf·in)
Radial load	N/A
Angle range of closing time	70 to 0 deg.
Temperature	23 ± 2°C (73.4 ± 35.6°F)
Durability	300,000 cycles

Temperature characteristics



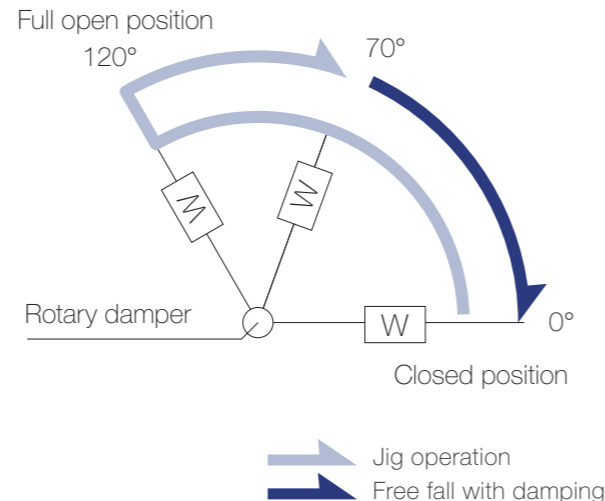
Measured according to the performance management testing method shown below after leaving in each designated ambient temperature for over one hour.

Performance management testing method

As the torque of partial rotation angle dampers is not consistent, the closing time measurement jig is used for the performance tests.

[Operation during measurement]  
(Secures the housing of a rotary damper and moves its shaft)  
All rotary dampers are managed by the following closing time test.

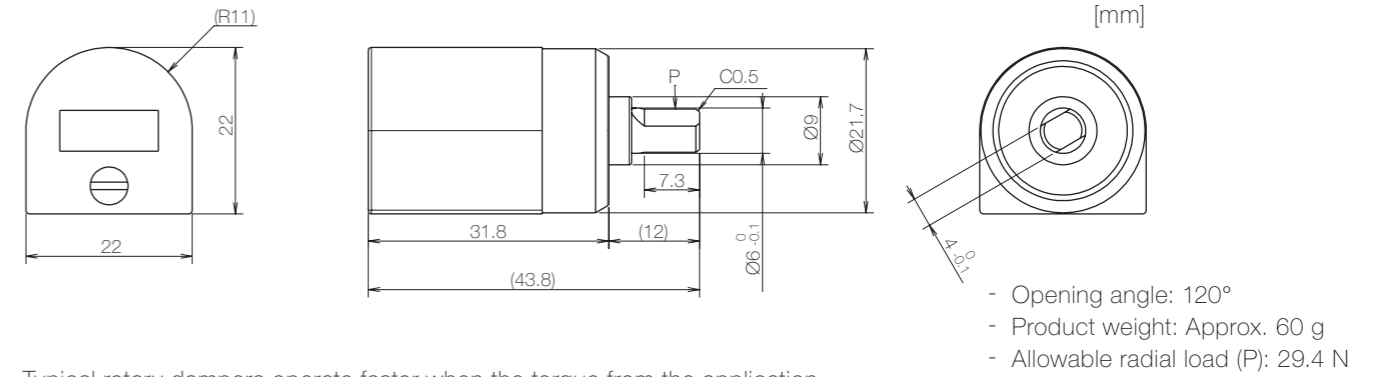
Test mode [120° → 70° (Pause) → (Free fall with damping) → 0°]  
\* Horizontal plane: 0°



Inspection specification before shipping

Type	Preset torque [N·m] (lbf·in)	Closing time
10K	1.0 (8.85)	1.5 to 6 sec

Product information



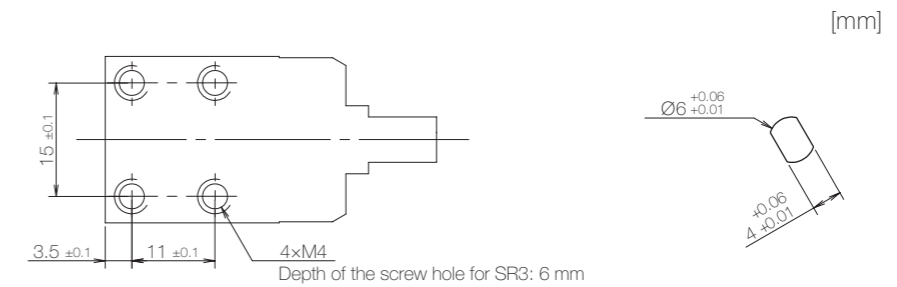
Typical rotary dampers operate faster when the torque from the application is higher than the preset torque and slower when the torque from the application is lower than the preset torque. However, SR3 maintains a constant damping speed through automatic torque adjustment.

Main materials

Housing	Zinc alloy (ZDC)
Cap	Zinc alloy (ZDC)
Shaft	Stainless steel (SUS)
Screw	Zinc alloy (ZDC)

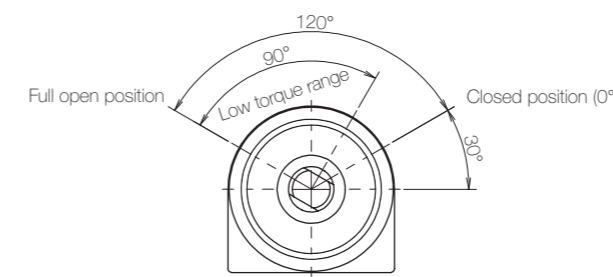
\* General tolerance: ±0.2

Dimensions related to mounting

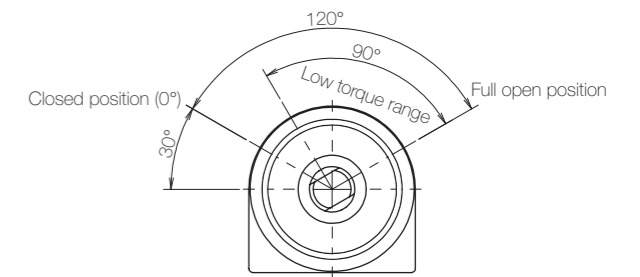


Opening angle

SR3-01-A



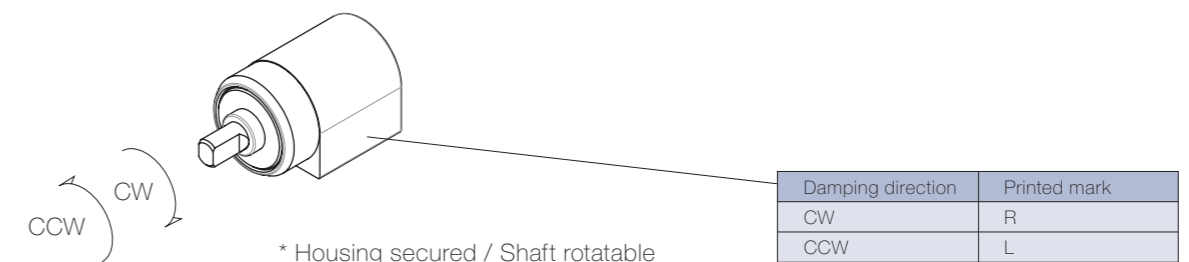
SR3-02-B



\* Shaft position at the time of shipping: Closed position

Damping directions

Rotation directions of the shaft to which torque is applied





# SRX

---

One-push Attachment and Detachment Device

T O K



# One-push Attachment and Detachment Device

SRX is a unit system that enables attachment and detachment with a single one-handed action. Its innovative internal structure securely holds the shaft simply by pushing it in with one hand, and releases it with a single push.

Watch Video



## Features

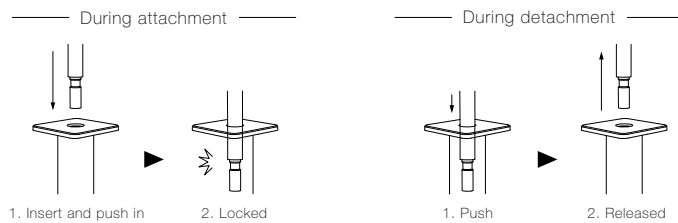
- Push-only mechanism enables easy and secure attachment/removal
- Allows remote attachment/removal in locations that are difficult to reach or where tools cannot easily access
- High durability allows use in applications requiring frequent attachment and detachment
- Simple exterior and structural design suitable for a wide range of environments

## Potential Applications

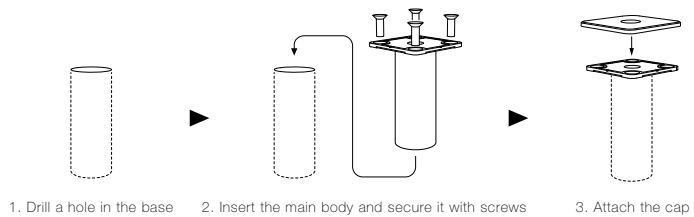
- |  |   |
|--|---|
| <p><b>1. Industrial</b></p> <ul style="list-style-type: none"> <li>- Manufacturing line equipment covers</li> <li>- Parts in hard-to-access locations</li> <li>- 3D signage parts</li> <li>- Manipulator functional modules</li> <li>- Drone cargo securing</li> </ul> | <p><b>2. Interior</b></p> <ul style="list-style-type: none"> <li>- Door holding in open position</li> <li>- Luxury retail displays and POP fixtures</li> <li>- Table tops</li> <li>- Restaurant and office partitions</li> <li>- Office furniture layout customization</li> <li>- Indoor clothes-drying fixture brackets</li> </ul> |
|--|---|

## How to Use

### 1. Attachment and detachment operation

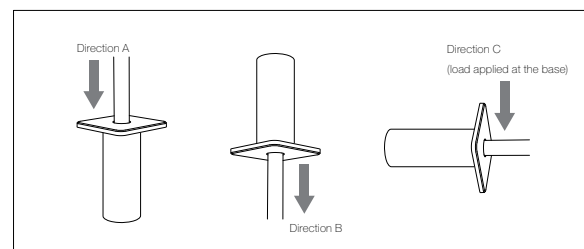


### 2. Main body installation

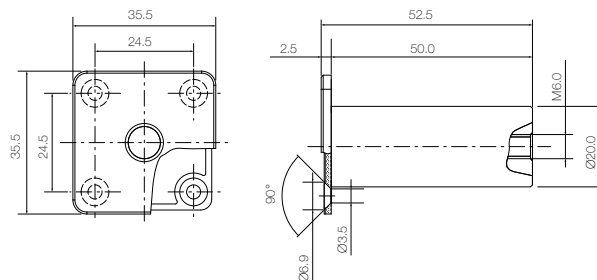


## Product Specifications

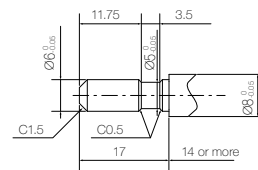
- |  |  |
|--|--|
| 1. Allowable load on the shaft in each direction | Direction A: 100N<br>Direction B: 50N<br>Direction C: 100N |
| 2. Durability                                    | 50,000 attachment/detachment cycles                        |
| 3. Operating Temperature Range                   | -10 °C to 50 °C  |



### 4. Product Dimensions



### 5. Shaft dimensions for insertion



\* Please prepare a shaft with the dimensions specified above. We can also manufacture the shaft upon request.

## Contact Us

Tel  
+81-50-1720-0482

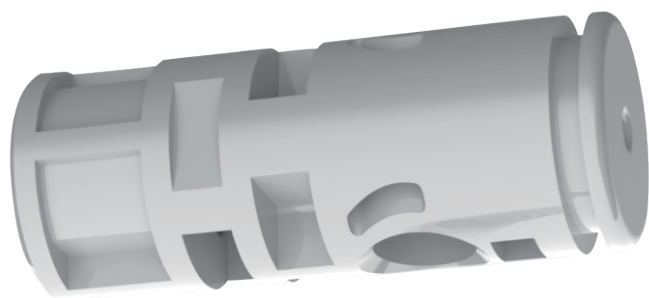


E-Mail  
support@tok-inc.com



Web  
https://tok-inc.com/en





# SR14

---

One-touch detachable device

**T O K**

# SR14

## One-Touch Detachable Mechanism Integrated with Rotary Damper

Watch Video



The shaft is held simply by insertion and released by pressing the side button. By integrating with the TOK TD100 Series rotary damper to add a slowdown mechanism, it becomes a compact mechanical component combining soft-close and detachable functions.

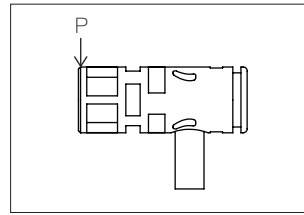
### Features

- Easy shaft installation by simple insertion
- Simply press the button to remove the shaft
- Compact design (Compared to our conventional products)
- PBT resin provides excellent chemical resistance

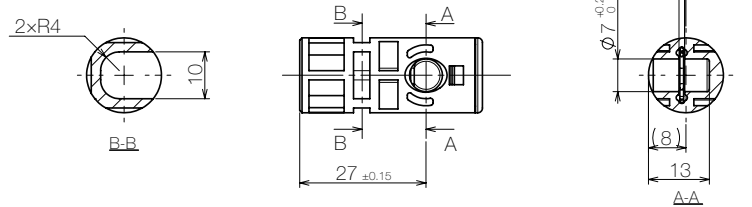
### Potential Applications

- Detachable toilet seat and lid
- Detachable washing machine lid
- Detachable trash bin lid
- Detachable display showcase

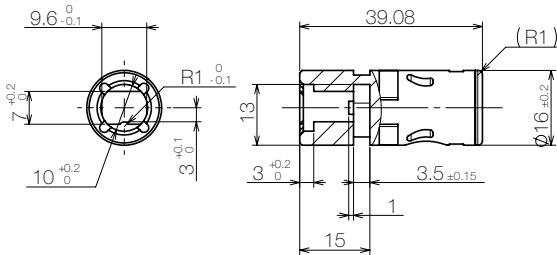
1. Allowable Load P: 19.6N
2. Unit Weight Approx. 6.3g
3. Operating Temperature Range 0 to 40 °C
4. Material PBT resin, Piano Wire (SWP)



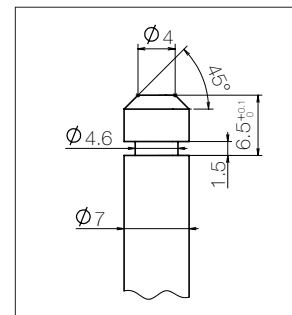
### 5. Dimension



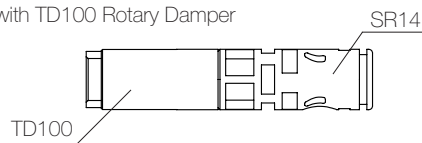
### Product Specifications



### Reference Shaft Dimensions

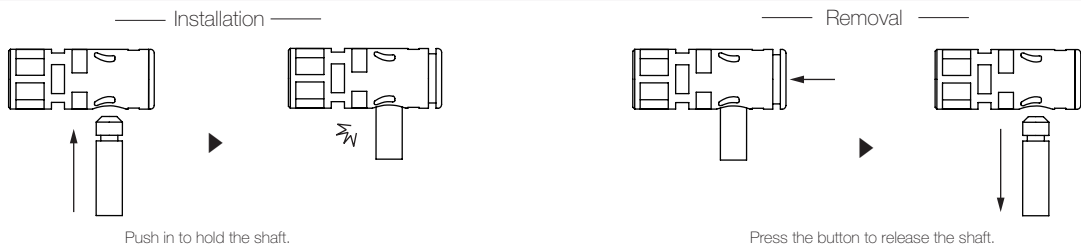


### 6. Integration Image with TD100 Rotary Damper



\*Please prepare a shaft with the dimensions shown above. We can also manufacture the shaft upon request.

### How to Use



Tel  
+81-50-1720-0482

E-Mail  
support@tok-inc.com

Web  
<https://tok-inc.com/en>

### Contact Us

