

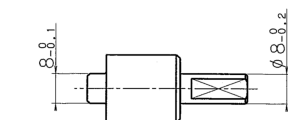
## TD112 SERIES



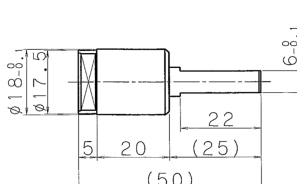
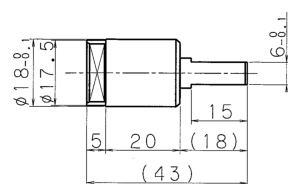
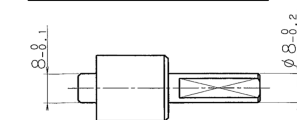
### FEATURES

- RoHS compliance
- TD112 series is stronger ver. than TD56 series on durability-wise.
- TD112 DAMPER permits  $2.94\text{N}\cdot\text{m}$  of maximum torque.
- TD112 series has 2 types of shaft-length.

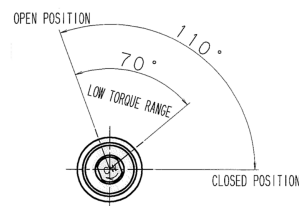
TD112A1/B1 series



TD112A2/B2 series



OPERATION ANGLE(SHAFT OPEN POSITION)



OPERATION ANGLE(SHAFT OPEN POSITION)

Above drawing shows operation angle of TD112 A1/A2 series dampers. Operation angle for TD112B1/B2 series dampers are symmetrical to the vertical line. Shaft position at the time of shipment is closed position.

### <Standard Components>

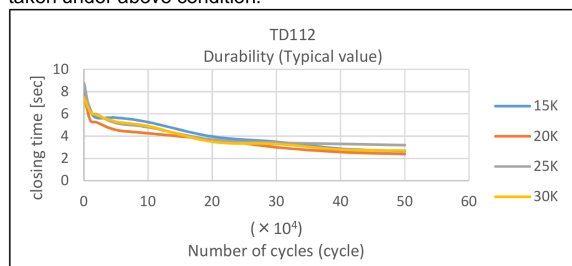
Part name	Material
Housing	ZDC
Shaft	ZDC
Cap	PBT

Code	Part No.	Allowable Torque [N·m]	(Kgf·cm)	Direction
611208	TD112A1-15K	[1.47]	(15)	CW(R)
611209	TD112B1-15K	[1.47]	(15)	CCW(L)
611202	TD112A1-20K	[1.96]	(20)	CW(R)
611203	TD112B1-20K	[1.96]	(20)	CCW(L)
611204	TD112A1-25K	[2.45]	(25)	CW(R)
611205	TD112B1-25K	[2.45]	(25)	CCW(L)
611200	TD112A1-30K	[2.94]	(30)	CW(R)
611201	TD112B1-30K	[2.94]	(30)	CCW(L)

Code	Part No.	Allowable Torque [N·m]	(Kgf·cm)	Direction
611234	TD112A2-20K	[1.96]	(20)	CW(R)
611235	TD112B2-20K	[1.96]	(20)	CCW(L)
611232	TD112A2-25K	[2.45]	(25)	CW(R)
611233	TD112B2-25K	[2.45]	(25)	CCW(L)
611230	TD112A2-30K	[2.94]	(30)	CW(R)
611231	TD112B2-30K	[2.94]	(30)	CCW(L)

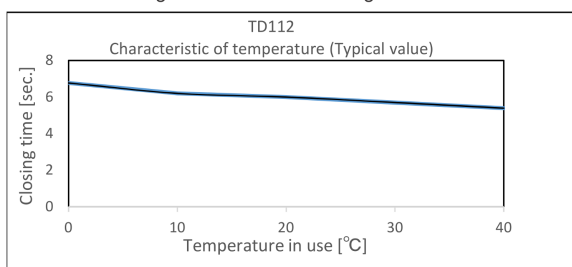
### DURABILITY

Each damper is set-up with an applied torque and weight on the shaft of the testing device. Measurements for closing time are taken under above condition.

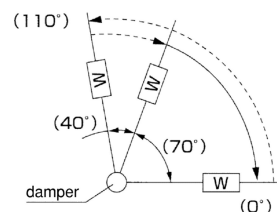


### TEMPERATURE CHARACTERISTICS

After the damper is stabilized at room temperature for 1 hour or more. The closing time is measured using a TOK made device.



Operation angle	110°	
Durability	50,000 cycles	
Closing time	Applied torque	Initial value
	1.47N・m(15kgf・cm)	3~10 (sec)
	1.96N・m(20kgf・cm)	3~10 (sec)
	2.45N・m(25kgf・cm)	3~10 (sec)
	2.94N・m(30kgf・cm)	3~10 (sec)



### TEST CONDITION

- ①Setting-up time : 20 sec/cycle
- ②Applied torque :
  - 1.0N·m(10kgf·cm)
  - 1.5N·m(15kgf·cm)
  - 2.0N·m(20kgf·cm)
  - 2.5N·m(25kgf·cm)
  - 3.0N·m(30kgf·cm)
- ③Temperature : 23°C±2°C
- ④Angle for measuring the closing time : 70° → 0°
- ⑤Radial force : nothing
- ⑥Closing time after durability test : 1 sec. or more

### TOK, Inc.

HEAD OFFICE, TOKYO, JAPAN – TEL : 81-3-3969-1534 FAX : 81-3-3969-9354  
EMAIL : en-contact@tok-inc.com

Product specification are subject to change without prior notice.

**Before assembly or use of any bearing, please read "Caution for Use"**